



Strategic Asset & Performance Management Division (SAPM)



Strategic Asset & Performance Management Division Mission Statement

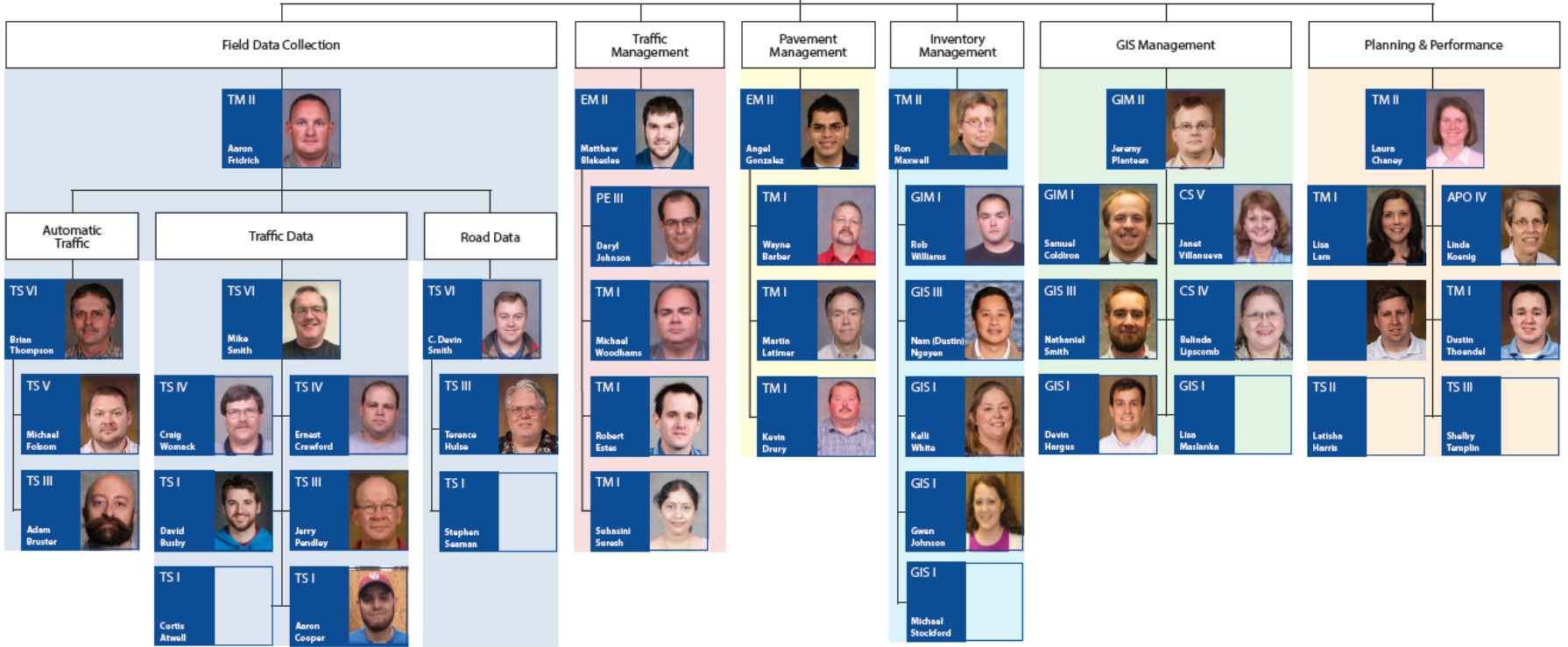
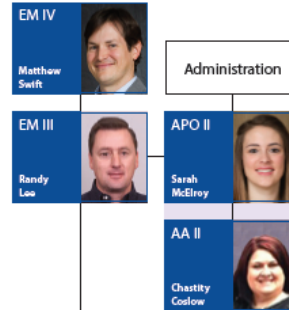
The Strategic Asset & Performance Management Division exists to help meet Oklahoma transportation needs through collecting, analyzing, and reporting highway asset and performance data, and communicating planning strategies to the stakeholders of the Oklahoma Department of Transportation.

TABLE OF ORGANIZATION

STRATEGIC ASSET & PERFORMANCE MANAGEMENT DIVISION

Revised: October 2017

- AA = Administrative Assistant
- APO = Administrative Program Officer
- CS = CADD Specialist
- EIT = Engineer In Training
- EM = Engineering Manager
- PE = Professional Engineer
- SEC = Secretary
- GIM = GIS Manager
- GIS = GIS Specialist
- GIT = GIS Technician
- TM = Transportation Manager
- TS = Transportation Specialist
- TT = Transportation Technician



Strategic Asset & Performance Management Division

Division Engineer

EM IV
Matthew Swift



Assistant Division Engineer

EM III
Randy Lee



Administration

APO II

Sarah Mcelroy



Office Manager

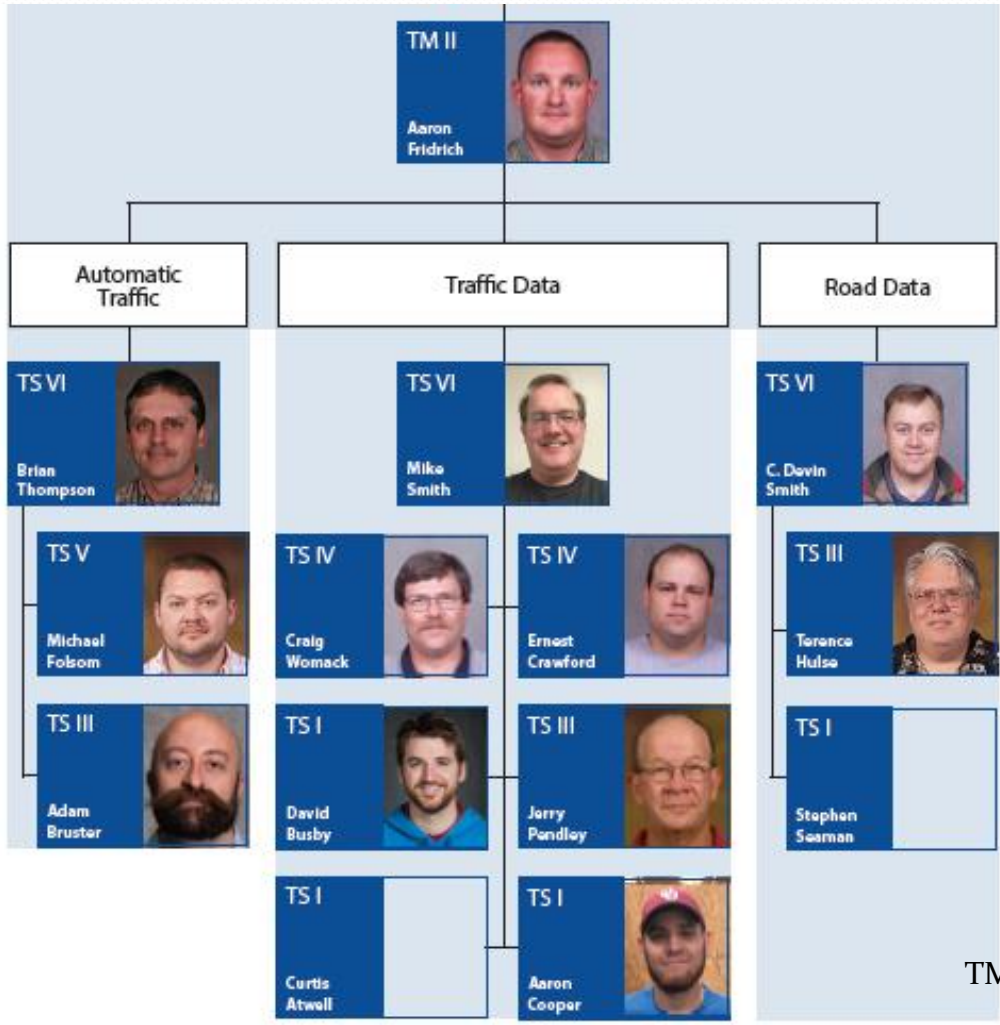
AA II

Chastity Coslow



Administrative Assistant

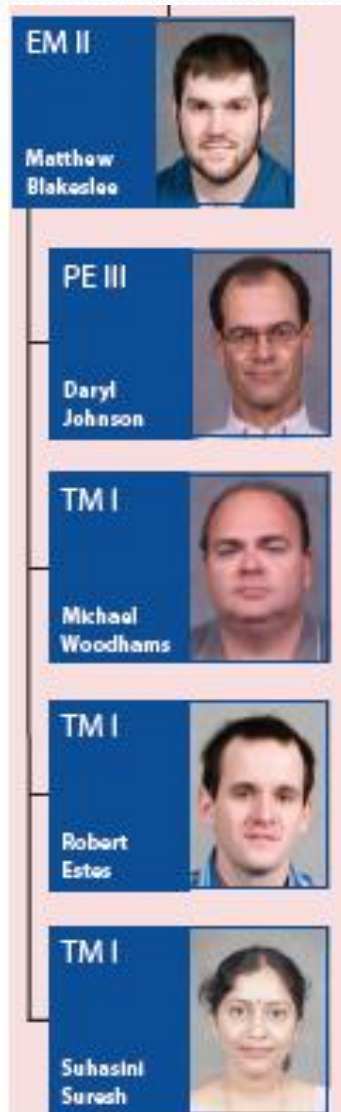
Field Data Collections



TM = Transportation Manager

TS = Transportation Specialist

Traffic Management



EM = Engineering Manager
PE = Professional Engineer
TM = Transportation Manager

Pavement Management



EM = Engineering Manager
TM = Transportation Manager

Inventory Management

TM II	
Ron Maxwell	
GIM I	
Rob Williams	
GIS III	
Nam (Dustin) Nguyen	
GIS I	
Kelli White	
GIS I	
Gwen Johnson	
GIS I	
Michael Stockford	

TM = Transportation Manager
GIM = GIS Manager
GIS = GIS Specialist

GIS Management



GIM = GIS Manager
GIS = GIS Specialist
CS = CADD Specialist

Planning & Performance



TM = Transportation Manager
TS = Transportation Specialist
APO = Administrative Programs Officer

Contacts

SAPM Front Desk

- Chastity Coslow 521-6433
CCoslow@ODOT.org

Planning & Performance

- Laura Chaney 521-2705
LChaney@ODOT.org

Inventory Management

- Ron Maxwell 521-2728
RMaxwell@ODOT.org

Traffic Management

- Matthew Blakeslee 522-6713
MBlakeslee@ODOT.org

Pavement Management

- Angel Gonzalez 522-5904
AAGonzalez@ODOT.org

GIS Management

- Jeremy Planteen 521-2729
JPlanteen@ODOT.org

Field Data Collection

- Aaron Fridrich 636-4180
AFridrich@ODOT.org